

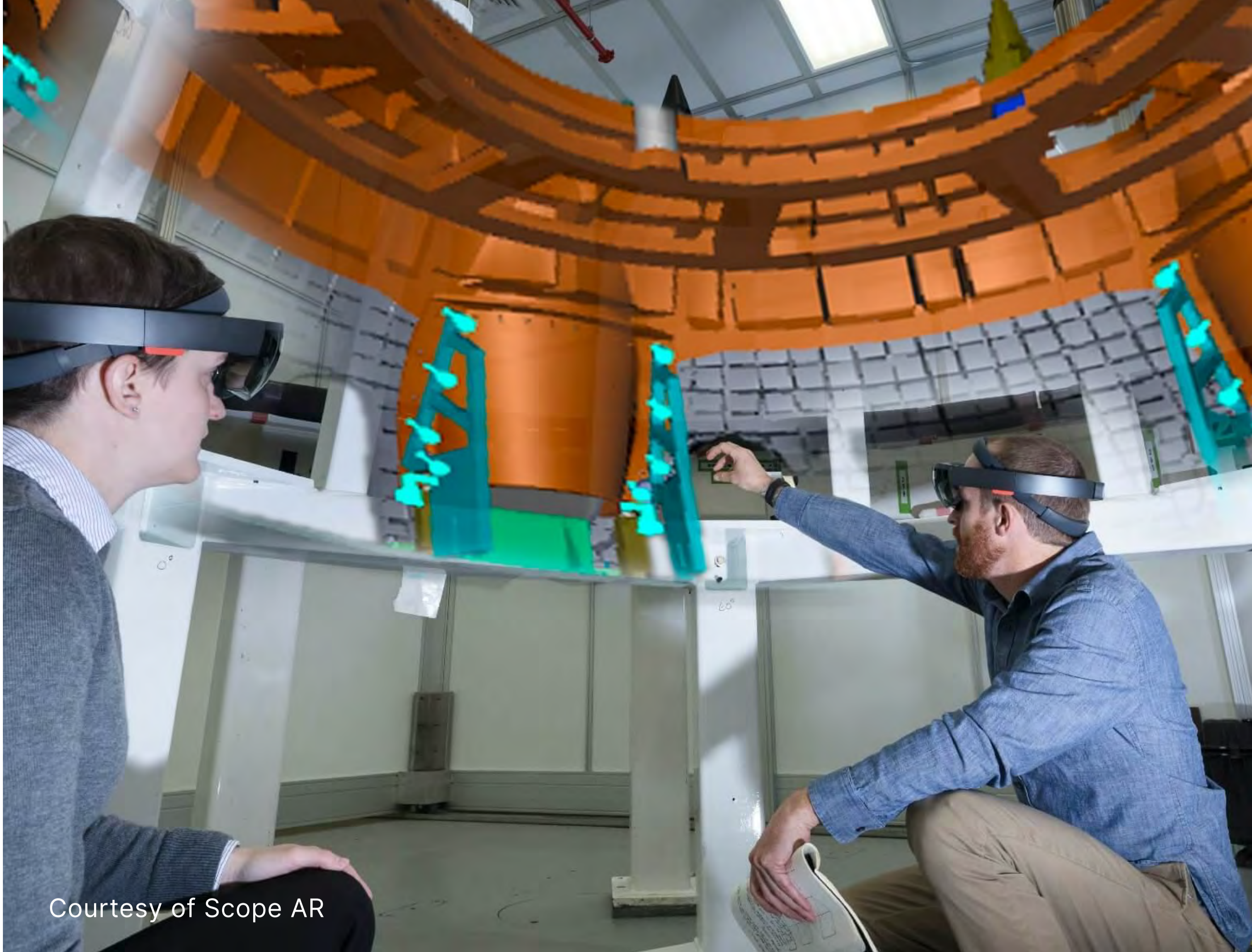
# Immersive 3D collaboration

Enhance stakeholder collaboration and decision-making with immersive real-time 3D visualization tools across devices.

Courtesy of Facebook Reality Labs

## The power of interactive real-time 3D visualization

Connect data and project stakeholders through a common platform and enable more interactive visualization in real-time to empower better, more timely decision-making.



Courtesy of Scope AR

## See the power of 3D in real-time

Immersive 3D collaboration enables real-time interaction with complex 3D models, boosting stakeholder communication and operational efficiency across diverse industries.

### Improved management, transparency and access

Reduce data redundancy by consolidating your 3D data onto a single platform. Make more effective, timely decisions to drive your business forward.

### Informed decision-making and collaboration

Connect your team and customers through a shared visual 3D space to enhance collaboration at every stage of the project lifecycle, from asset design to operations.

### Optimize cost savings

Unity's streamlined platform helps make design feedback and predictive maintenance schedules more efficient, accelerating your time to market and lowering production costs.

### Stand-out experiences

Leverage the latest in headset and 3D technology to create innovative experiences for your team and your customers.

## Start building with Unity



Courtesy of Cross Compass

### Unity Industry

Build interactive, immersive collaboration apps.

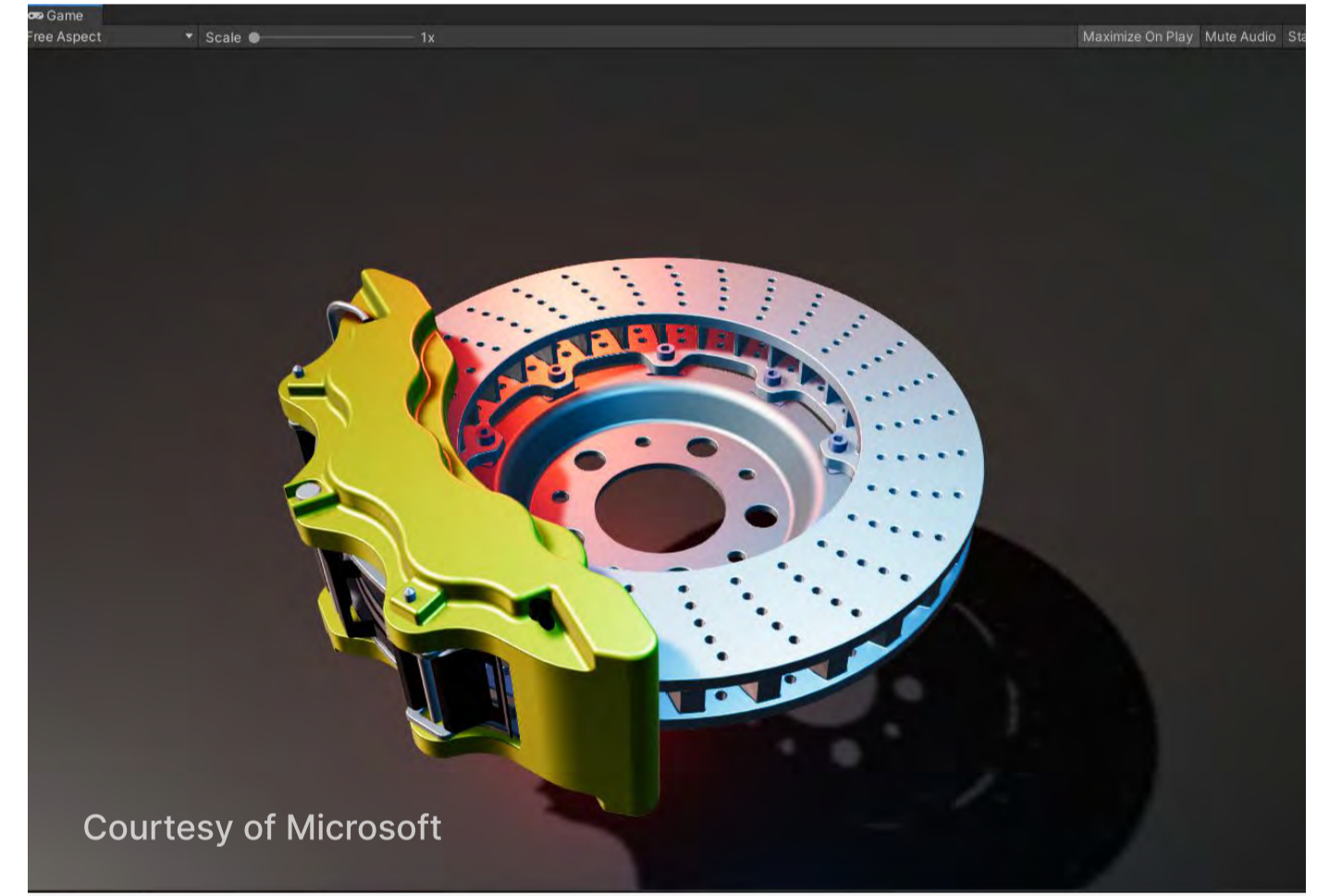
- Create lifelike simulations of your products, facilities, and processes with the Unity Engine's creation tools.
- Quickly import and prepare your large CAD, mesh, and point-cloud models with Pixyz Plugin.
- Overcome roadblocks with industry-leading support, including dedicated advisors, premium support, and 300+ hours of On-Demand Training.



### Unity Asset Manager

Bring order to development chaos.

- Unify content across your company and create one source of truth to make the most of every asset.
- Easily browse and search content with intuitive collections, keywords, license-type, or metadata tags based on existing file structure.
- Easily distribute your Asset Manager-connected experiences with Collaborate Licenses, ensuring your teams are collaborating on the latest revisions.



Courtesy of Microsoft

### Pixyz

Unlock the value of your 3D data.

- Import engineering CAD, BIM, Point Cloud, and other 3D data directly into Unity.
- Process CAD models from industry-leading solutions and retain product hierarchy and metadata.
- Obtain the best mesh quality for your applications.



Courtesy of Varjo

**“Our use cases of Unity are increasing almost every week. From car design all the way to consumer-facing experiences, we’re using Unity to bridge departments and enable better collaboration.”**

— Timmy Ghiurau, Innovation Leader, Virtual Experiences, Volvo Cars

## Find out more

Learn how to transform asset visualization and improve stakeholder communication with the power of real-time 3D. Get in touch with a Unity representative to get started.

[LEARN MORE →](#)